

ROUGH TERRAIN FORKLIFTS

Compact, powerful and versatile





1500 kg ELECTRIC

4

C151E



1500 Kg

8

C151H



2000, 2500, 3500 Kg

10

C201H

C251H

C351H



5000 Kg

14

C501H

AUSAnow

16

Technical data

18

Dimensions

22

Equipment

24

ELECTRIC FORKLIFT

1500 KG

The C151E is a rough terrain forklift ideal for working in emission-free spaces such as greenhouses, municipal works carried out at night, enclosed spaces, etc. It can be used in more applications than a traditional rough terrain forklift, allowing for greater efficiency.

It has been designed with sufficient battery capacity for a complete day of work without needing to be recharged. And whenever necessary, it can be connected directly to the mains via a single-phase or three-phase socket. It also features a fast charger.

With a peak power of 19.6 kW and excellent off-road capability, it can work on difficult terrain and gradients of up to 33%.

FEATURED EQUIPMENT

Charging cable in the vehicle, so it can be plugged in at any time. **Ergonomic joystick** that controls the hydraulic functions and the transmission. **Seat belt with a buckle sensor and seat with presence sensor** to prevent the machine from being used without the minimum safety measures. **High-comfort seat with built-in suspension** for enhanced comfort throughout the workday. **Digital screen** with all of the information about the machine and self-diagnostics. **Negative brake** that is applied automatically when the motor stops. **Energy recovery system** that increases the battery range.





Battery capacity
Up to 18.6 kWh

Charging from
20 to 80%
3:15 h*

Battery type
Li-Ion

* Subject to environmental conditions and to the kind and power of charging station.



C151E 1500KG
TRACTION 4x4 FULLGRIP®
POWER 19.6KW WIDTH 1,390MM TRANSMISSION ELECTRIC

ROUGH TERRAIN FORKLIFT

1500 KG



C151H 1500KG
TRACTION 4x2 / 4x4 FULLGRIP®
POWER 18.5KW **WIDTH** 1,390MM **TRANSMISSION** HYDROSTATIC

AUSA's most compact rough terrain forklift. With its 1,500 kg payload and extremely small size, it has outstanding handling and versatility.

It is ideal for labour-intensive work in the farming sector and in small-scale municipal works where small loads have to be moved.

The C151H is available with 4x4 and 4x2 drive, so there are options to meet every need.



FEATURED EQUIPMENT

Easy-to-access components to reduce downtime for maintenance. **Ergonomic joystick** that controls the movements of the mast and the transmission. **Hydrostatic transmission** to ensure smooth and safe operation for the user. **Spacious driver's cab** for comfortable and safe handling. **Rotating beacon** for increased visibility on the jobsite. **Negative brake** that is applied automatically when the motor stops (only on the C151H model).

ROUGH TERRAIN FORKLIFT

2000 - 2500 - 3500 KG

The most advanced range of compact forklifts available on the market. These powerful and robust models are equipped with the latest technology to achieve the best off-road performance with minimal fuel consumption.

They are designed for medium-scale tasks in the construction and agricultural sectors, reaching their full potential on difficult terrains thanks to their sturdiness and high payload.

They also have a digital display in the driver's cab which provides all of the machine's real-time information, allowing you to run self-diagnostics without the need for any external tools.

FEATURED EQUIPMENT

Tilting cab for easy access to the engine and components. **Ergonomic joystick** that controls the movements of the mast and the transmission. **Steering wheel with adjustable** height and reach, for optimum operator comfort and safety. **Digital screen** to access machine information and on board diagnostics. **Limited-slip differential** on the front axle, which transmits the necessary amount of power to each individual wheel. **ECO Mode** to automatically regulate the RPM to ensure low consumption and reduced maintenance costs. **Seat belt with a buckle sensor** and seat with presence sensor to prevent the machine from being used without following the minimum safety procedures. **Negative brake** which is automatically engaged when the engine is turned off.





C201H 2000KG
TRACTION 4x2 / 4x4 FULLGRIP®
POWER 18.5KW WIDTH 1,520MM TRANSMISSION HYDROSTATIC



C251H 2500KG
TRACTION 4x2 / 4x4 FULLGRIP®
POWER 31.2KW WIDTH 1,520MM TRANSMISSION HYDROSTATIC



C351H 3500KG
TRACTION 4x4 FULLGRIP®
POWER 31.2KW WIDTH 1,780MM TRANSMISSION HYDROSTATIC



C501H 5000KG
TRACTION 4x4 FULLGRIP®
POWER 55KW **WIDTH** 2,010MM **TRANSMISSION** HYDROSTATIC

FEATURED EQUIPMENT

Tilting cab for easy access to the engine and components. **Ergonomic joystick** that controls the movements of the mast and the transmission. **Steering wheel with adjustable height and reach**, for optimum operator comfort and safety. **Digital screen** to access machine information and on board diagnostics. **Limited-slip differential** on the front axle, which transmits the necessary amount of power to each individual wheel. **ECO Mode** to automatically regulate the RPM to ensure low consumption and reduced maintenance costs. **Seat belt with a buckle sensor and seat with presence sensor** to prevent the machine from being used without following the minimum safety procedures. **Negative brake** which is automatically engaged when the engine is turned off.

ROUGH TERRAIN FORKLIFT

5000 KG

The C501H is AUSA's rough terrain forklift with the highest payload. Designed for large-scale work, especially in the construction sector and for moving large materials.

Its large payload contrasts with its small size, allowing it to maintain excellent maneuverability on difficult terrains.

They also have a digital display in the driver's cab which provides all of the machine's real-time information, allowing you to run self-diagnostics without the need for any external tools.



All AUSA forklifts can be equipped with AUSAnow, the software used to remotely control machines, providing you with all real-time information.



Control your fleet of machines

From your office or with your mobile phone. Control all of your AUSA machines in real time. With AUSAnow you can anticipate any faults and maintenance, to reduce downtime.



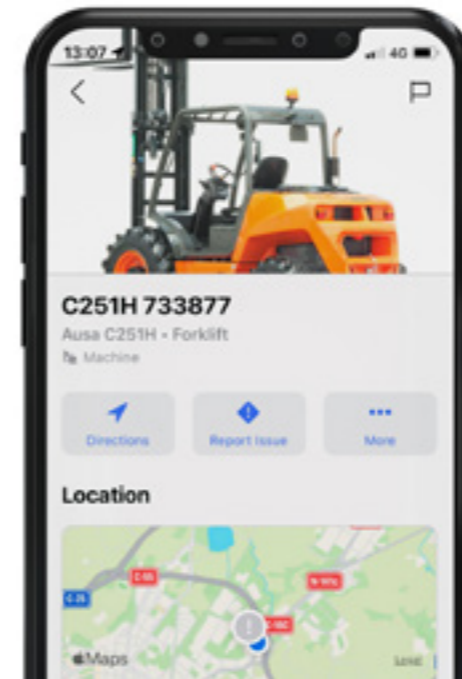
Get information and make decisions

View or create your own personalised charts to obtain in-depth information about the operation of your machines and make decisions that are based on analytical information.



Connect security alarms

Establish a schedule and security perimeter. If one of your machines is moved outside the established area, AUSAnow will alert you straight away so that you can deal with it.



Data, data and more data

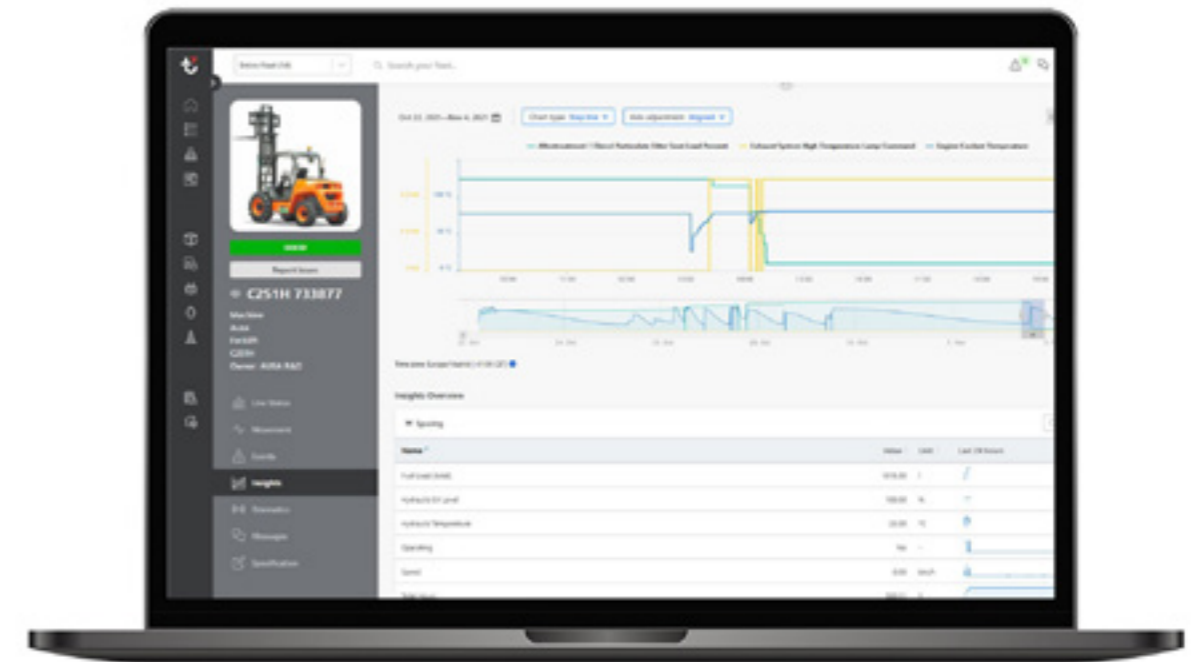
AUSAnow allows you to obtain advanced real-time information about your machine fleet. View advanced charts for customised time periods based on the parameters set by you.



Reduce downtime

AUSAnow connects you to your dealer or rental company, so that any appropriate maintenance can be performed. If you have a problem, AUSAnow provides you with a direct channel of communication with your machine supplier, so that it can be resolved as quickly as possible.

- Preventive alerts
- Attach images



Alarms for your peace of mind

Activate AUSA's recommended maintenance alerts and keep your machines in tip-top condition. And, for your security, you can program geofences and receive alerts if they go outside the established boundaries.

- Customise a schedule
- Set a perimeter

TECHNICAL DATA

TECHNICAL DATA

		C151E
GENERAL		
Load capacity to 500 mm	kg	1500
Load capacity to 600 mm	kg	1350
Unladen weight *	kg	2740
Transmission	-	Electric
MAST		
Fork carriage	-	FEM IIB
Carriage width	mm	1260
ENGINE		
Make	-	-
Model	-	-
Power	kW	-
Peak/Nominal power	kW	19,6 / 7,6
Operating speed	rpm	-
Torque	N-m@rpm	130
No. cylinders	-	-
Emissions	-	Zero emissions
Noise	dB(A)	-
DRIVING		
Max. speed	km/h	16
Gradability	%	33
Traction	-	4x4 FullGrip®
Front tyres	-	27x10.50-15
Rear tyres	-	27x10.50-15
HYDRAULIC SYSTEM		
Hydraulic circuit	-	Two gears pump
Flow rate	l/min	34
Working pressure	bar	215
TANK CAPACITY		
Fuel	l	-
Hydraulic	l	40
BRAKES		
Service	-	Sealed. Hydraulic drive
Parking	-	Negative, electric release
BATTERY		
Battery type	-	Lithium-Ion Battery (NCM)
Gross capacity	kWh	15,5
System voltage	V	48
Autonomy ****	-	One intense shift
CHARGE		
Charger	-	Integrated
Charging time 20-80% ***	-	3:15 h (@230 V)
Charging time 20-80% (external fast charger) ***	-	1 h (@400 V)
Charging cable plug type	-	110V (yellow); 230V (blue); 400V (red)

* It may change due to optional equipment. ** Height measure is different from ISO 2328 standard measure. *** Subject to environmental conditions and to the kind and power of charging station. **** Subject to environmental conditions and the kind of use. For temperatures under 0°C it is recommended to fit the "Additional battery for longer range (+3.1 kWh)".

C151H x2	C151H x4	C201H x2	C201H x4
	1500		2000
	1350		1840
2770		2870	
	Hydrostatic		Hydrostatic
	FEM IIB		FEM IIB**
	1260		1260/1660
	KUBOTA		KUBOTA
	D1105		D1703-M-DI-E4
	18,5		18,5
	-		-
	3000		2200
	71,5@2200		97,4@1500
	3		3
	Stage V - Tier4		Stage V, Tier 4
	101		104
	18		17
32		25	
4x2	33	4x2	40
	4x4 FullGrip®		4x4 FullGrip®
	27x10.50-15		10.0/75-15.3
7.00-12		7.00-12	
	27x10.50-15		23x8.5-12
	Two gears pump		18cc and 8cc two gears pump
	34		37
	215		185
	35		62
	40		51
	Hydrostatic, retention		Sealed. Hydraulic drive
	Negative		Negative brake and electro-hydraulic release
	-		-
	-		-
	-		-
	-		-
	-		-
	-		-
	-		-

TECHNICAL DATA

TECHNICAL DATA

		C251H x2	C251H x4
GENERAL			
	UNIT		
Load capacity to 500 mm	kg		2500
Load capacity to 600 mm	kg		2275
Unladen weight *	kg	4100	4255
Transmission	-	Hydrostatic	
MAST			
Fork carriage	-	FEM IIB**	
Carriage width	mm	1260/1660	
ENGINE			
Make	-	KUBOTA	
Model	-	V2403-CR E5B	
Power	kW	31,2	
Operating speed	rpm	2200	
Torque	N-m@rpm	159,8@1600	
No. cylinders	-	4	
Emissions	-	Stage V, Tier 4	
Noise	dB(A)	104	
DRIVING			
Max. speed	km/h	20	
Gradability	%	25	38
Traction	-	4x2	4x4 FullGrip®
Front tyres	-	12.5/80-18	
Rear tyres	-	6.00-9	10.0/75-15.3
HYDRAULIC SYSTEM			
Hydraulic circuit	-	24cc and 8cc two gears pump	
Flow rate	l/min	50	
Working pressure	bar	210	
TANK CAPACITY			
Fuel	l	62	
Hydraulic	l	51	
BRAKES			
Service	-	Sealed. Hydraulic drive	
Parking	-	Negative brake and electro-hydraulic release	

* It may change due to optional equipment. ** Height measure is different from ISO 2328 standard measure.

	C351H	C501H
	3500	-
	3230	5000
	5430	7770
	Hydrostatic	Hydrostatic
	FEM IIIB**	FEM IVB**
	1260/1660	1660
	KUBOTA	DEUTZ
	V2403-CR E5B	TD 3.6
	31,2	55
	2200	1800
	159,8@1600	340@1600
	4	4
	Stage V, Tier 4	Stage V, Tier 4
	104	104
	20	20
	35	35
	4x4 FullGrip®	4x4 FullGrip®
	16/70-20	18-19.5
	12-16.5	12-16.5
	24cc and 8cc two gears pump	30cc and 14,6cc two gears pump
	50	59
	200	235
	62	117
	51	114
	Sealed. Hydraulic drive	
	Negative brake and electro-hydraulic release	

DIMENSIONS

DIMENSIONS

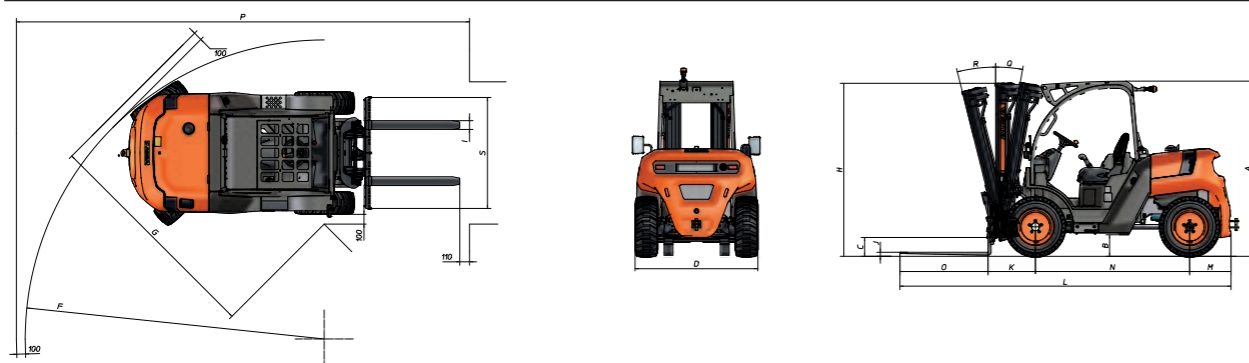
	Maximum lift	C151E	C151H	C201H	C251H	C351H	C501H	C151E	C151H	C201H	C251H	C351H	C501H
TYPE OF MAST	(mm)	H - RETRACTED MAST HEIGHT (mm)						EXTENDED MAST HEIGHT (mm)					
Duplex mast	2660	2040	2040	-	-	-	-	3290	3290	-	-	-	-
Duplex mast	3300	-	-	2410	2460	2670	-	-	-	4170	4220	4570	-
Duplex mast	3700	-	-	-	-	-	2770	-	-	-	-	-	4600
Triplex mast	3700	-	-	2070	2120	2130	-	-	-	4620	4670	4970	-
Triplex mast	4000	1980	1980	-	-	-	-	4670	4670	-	-	-	-
Triplex mast	4250	-	-	-	-	-	2370	-	-	-	-	-	5280
Triplex mast	4300	-	-	2230	2300	-	-	-	-	5250	5300	-	-
Triplex mast	5400	-	-	2610	2690	2700	-	-	-	6620	6370	6670	-
Triplex mast	5450	-	-	-	-	-	2770	-	-	-	-	-	6480

Standard masts in bold

C151E	C151H	C201H	C251H	C351H	C501H	C151E	C151H	C201H	C201H	C251H	C251H	C351H	C351H	C501H
FREE LIFT (mm)						LOAD AT MAXIMUM HEIGHT (kg) ROUGH TERRAIN USE								
						Standard axle	Wide axle	Standard axle	Wide axle	Standard axle	Wide axle	Standard axle	Wide axle	
0	0	-	-	-	-	1500	1500	-	-	-	-	-	-	-
-	-	120	120	120	-	-	-	2000	-	2500	-	3500	-	-
-	-	-	-	-	100	-	-	-	-	-	-	-	-	5000
-	-	1130	1130	1200	-	-	-	2000	-	1740	-	3500	-	-
1360	1360	-	-	-	-	1200	1200	-	-	-	-	-	-	-
-	-	-	-	-	1390	-	-	-	-	-	-	-	-	4250
-	-	1330	1330	-	-	-	-	2000	-	2155	-	-	-	-
-	-	1680	1680	1680	-	-	-	1250	-	1500	-	1400	-	-
-	-	-	-	-	1790	-	-	-	-	-	-	-	-	2500

Machines with wide axles for high-lift masts

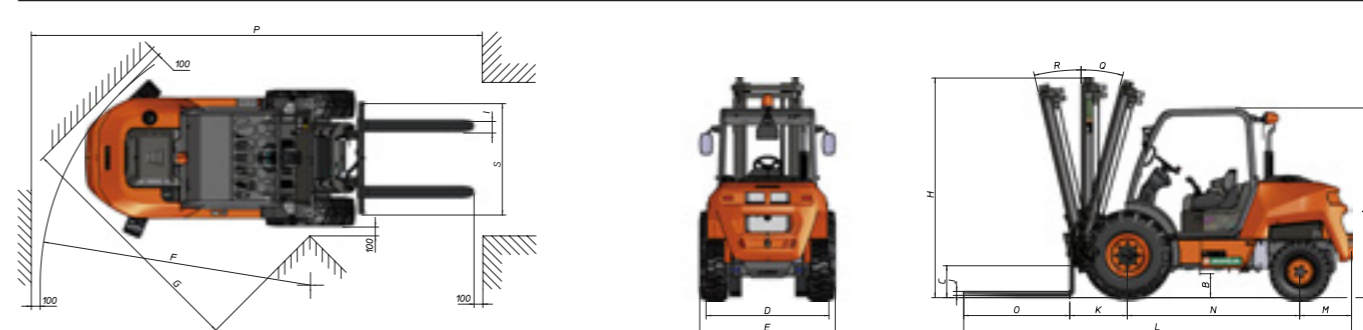
C151E - C151H



	C151E	C151H x2	C151H x4	C201H x2
DIMENSIONS (mm)				
A	1975	1975	1975	2090
B	235	235	235	210
C	205	205	205	310
D	1390	1315	1390	1390
E	1390	1390	1390	1520
E*	-	-	-	1780
F	3380	2690	3380	3020
G	2550	2505	2550	2780
I	100	100	100	100
J	35	35	35	40
K	535	535	535	650
L	3755	3755	3755	4380
M	470	470	470	580
N	1750	1750	1750	1950
O	1000	1000	1000	1200
P	5120	4430	5120	5070
S	1260	1260	1260	1260
S**	-	-	-	1600
DIMENSIONS (°)				
Q	-	-	-	11
R	-	-	-	12

* Measured with high-lift mast installed ** Measured for wide axle carriage

C201H - C251H - C351H - C501H



	C201H x4	C251H x2	C251H x4	C351H	C501H
	2090	2140	2150	2190	2350
	210	270	210	320	280
	310	360	310	375	290
	1490	1390	1547	1645	1760
	1520	1520	1520	1780	2010
	1780	1780	1780	2050	2010
	4020	3020	4120	4350	4410
	2850	2760	2850	3090	3210
	100	100	100	120	120
	40	45	40	50	50
	650	650	650	710	720
	4380	4385	4385	4540	4610
	580	585	580	615	640
	1950	1950	1950	2020	2050
	1200	1200	1200	1200	1200
	6180	5100	6180	6645	6430
	1260	1260	1260	1310	1660
	1600	1600	1600	1710	-
	11	11	11	11	11
	12	12	12	12	12

EQUIPMENT

	C151E	C151H	C201H	C251H	C351H	C501H
DRIVING POSITION						
Open cab	●	●	●	●	●	●
Semi-closed cab with front, rear and upper windscreens	○	○	○	○	○	○
Closed cab with heating	○	○	○	○	○	○
Closed cab with heating and air conditioning				○	○	○
Open ROPS cab			○	○	○	
Semi-closed ROPS cab with front, rear and upper windscreens			○	○	○	
Closed ROPS cab with heating			○	○	○	
Closed ROPS cab with heating and air conditioning				○	○	
Tilting cab with assisted lift			●	●	●	●
MASTS						
2.66 m duplex mast	●	●				
3.30 duplex mast			●	●	●	
3.70 m duplex mast						●
3.70 m triplex mast			○	○	○	○
4.00 m triplex mast	○	○				
4.25 m triplex mast						○
4.30 m triplex mast with wide shaft			○	○		
5.40 m triplex mast with wide shaft			○	○	○	
5.45 m triplex mast						○
SAFETY						
Seat belt with fasten sensor	●	●	●	●	●	●
Seat with operator's presence sensor	●	●	●	●	●	●
LED rotating beacon	●	●	●	●	●	●
Acoustic warning for reverse gear		●	●	●	●	●
White noise acoustic warning for reverse gear	●	○	○	○	○	○
Blue Spot light	○	○	○	○	○	○
Emergency stop	●	●	●	●	●	●
Hill Holder - hill-start assist	●			●	●	●
Negative brake	●	●	●	●	●	●
Joystick lock						○
LIGHTING AND DRIVING						
Full LED Road lights	○		○	○	○	○
Road lights with LED daylight		○	○	○	○	○
Front and rear LED working lights	○	○	○	○	○	○
Rear-view mirrors	●	●	●	●	●	●
Top speed limited to 15 km/h				○		

	C151E	C151H	C201H	C251H	C351H	C501H
COMFORT						
Adjustable ergonomic seat	●	●	●	●	●	●
Extra comfort seat, fully adjustable			○	○	○	○
Steering wheel with adjustable tilt and reach			●	●	●	●
All-in-one joystick	●	●	●	●	●	●
Armrest	●	●	●	●	●	●
ADVANCED EQUIPMENT						
Electric transmission	●					
Hydrostatic transmission		●	●	●	●	●
Second-generation FullGrip® (4WD)	●	●		●	●	●
Limited-slip differential on the front axle			●	●	●	●
Inching pedal			●	●	●	●
ECO Mode system				●	●	●
Digital display	●		●	●	●	●
AUSAnow fleet manager	○	○	○	○	○	○
Warranty extension	○	○	○	○	○	○
Additional battery for longer range (+3.1 kWh)	○					
External fast charger	○					
Additional connector for external fast charger	○					
Integrated dual charger	○					
FORKS						
1,000 mm forks	●	●				
1,200 mm forks	○	○	●	●	●	●
2,438 mm forks				○		
2,438 mm forks (FEM IIA)				○		
1,260 mm type FEM II fork carriage				●		
1,260 mm type FEM IIB fork carriage	●	●	●			
1,260 mm type FEM III fork carriage					●	
1,660 mm type FEM IV fork carriage						●
1,200 mm load rest	○	○				
1,260 mm load rest			○	○		
1,310 mm load rest					○	
1,660 mm load rest			○	○		○
1,710 mm load rest					○	
1,730 mm load rest						○
Built-in side shifter	●	●	●	●	●	●

● Standard ○ Optional

EQUIPMENT

EQUIPMENT

	C151E	C151H	C201H	C251H	C351H	C501H
IMPLEMENTS						
400-litre shovel				○		
420-litre shovel	○	○				
600-litre shovel				○		
800-litre shovel					○	
1,000-litre shovel					○	
ACCESSORIES						
4th valve for two-way action control	○	○	○	○	○	○
Load damper	○	○	○	○	○	○
Reverse gear acoustic warning disable switch	○	○	○	○	○	○
Fan protective grille			○			
Car radio	○	○	○	○	○	○
Waterproof document holder			○	○	○	○
Water separator diesel filter		○	○	●	●	●
Air filter with cyclone pre-filter			○	○	○	○
Biodegradable hydraulic oil	○	○		○		
Battery master switch	●					
TYRES						
520/50R17 front and 31x15.5-15" rear flotation tyres				○		
PARTS						
Spare wheel	○	○	○	○	○	○
1,000 h maintenance kit	○	○	○	○	○	○

● Standard ○ Optional



AUSA
C/ Castelladral 1
08243 Manresa - Barcelona
SPAIN
Tel. +34 93 874 7311
ausa@ausa.com
www.ausa.com

AUSA Spain: +34 91 669 00 06 ausa.madrid@ausa.com
AUSA France: +33 (0) 4 68 54 38 97 - ausa.france@ausa.fr
AUSA U.K.: +44 (0)7703 60 9009 - ausa.uk@ausa.com
AUSA Central Europe: +49 2384 9415725 - kontakt@ausa.com
AUSA U.S.: +1 (310) 426 2305 - ausa.us@ausa.com
AUSA CHINA: +86 10 8598 7386 - ausa.china@ausa.com

MKCAT.FK.EU.EN03

Distributor's stamp



www.ausa.com