



# ARTICULATED DUMPER

From 1.000 to 10.000 kg payload. Tough, compact and efficient





1000, 1500 kg **ELECTRIC** 4

D101AEA | D101AEA COMPACT  
D151AEG



1000, 1200, 1500 kg 8

D100AHA | D100AHG  
D120AHA | D120AHG  
D150AHA | D150AHG



2000, 3000, 3500, 4500 kg 12

D201AHG  
D301AHG  
D350AHG  
D450AHG



6000, 10000 kg 16

D601AHG | D601APG  
D1001APG



6000, 10000 kg - **REVERSIBLES** 20

DR601AHG  
DR1001AHG

**AUSAnow** 24

**Technical data** 26

**Dimensions** 32

**Equipment** 34

① Images throughout the catalogue may refer to non-standard machines. Products are subject to modifications without prior notice.



# ELECTRIC DUMPER

## 1000 - 1500 KG

Electric power for the whole day. AUSA's electric dumpers have been designed with an operating range to complete a busy working day without needing to be recharged.

With the charging cable built into the machine, they can be connected directly to the mains via a 110 V or 230 V socket or a 415 V socket with a fast charger.

Thanks to their minimal noise emissions, they can be used in a wider range of applications than traditional dumpers, and in works that are carried out at night.

The li-ion battery pack is controlled electronically to deliver smooth maximum power and all-terrain performance that matches diesel vehicles.



### FEATURED EQUIPMENT

**Charging cable** in the vehicle, so it can be plugged in at any time. **Folding ROPS** roll bar to make it easier to transport. **Driving position with plenty of space** for comfortable and safe driving. **Digital screen** with all of the information about the machine and self-diagnostics. **Hill holder**, which keeps the machine stationary on any slope, without putting your foot on the brake. **Easy-to-access components** to reduce downtime for maintenance. **Ergonomic joystick** that controls the skip movements and the transmission. **Seat belt with a buckle sensor and seat with presence sensor** to prevent the machine from being used without following the minimum safety procedures. **Negative brake** that is applied automatically when the motor stops. **Energy recovery system** that increases the battery range.





*\* Subject to environmental conditions and to the kind and power of charging station.*



**D101AEA 1000KG**  
UNLOADING SYSTEM HIGH  
POWER 19.6KW WIDTH 1,480MM TRANSMISSION ELECTRIC



**D101AEA COMPACT 1000KG**  
UNLOADING SYSTEM HIGH  
POWER 19.6KW WIDTH 1,480MM TRANSMISSION ELECTRIC



**D151AEG 1500KG**  
UNLOADING SYSTEM ROTATING  
POWER 19.6KW WIDTH 1,480MM TRANSMISSION ELECTRIC



# ARTICULATED DUMPER

## 1000 - 1200 - 1500 KG

AUSA's most compact range of dumpers, available with three different payloads and they can be configured with a high-tipping skip or a swing skip.

These models are perfect for municipal works, landscaping projects or small demolitions, situations that require highly manoeuvrable vehicles that are extremely compact in size.

Thanks to their permanent 4WD, they can handle narrow terrain and steep slopes.



### FEATURED EQUIPMENT

**Folding ROPS** for ease of transportation. **Spacious driver's position** for comfortable and safe handling. **Rotating beacon** that makes it more visible for people outside the vehicle. **Hydrostatic transmission** to ensure smooth and safe operation for the user. **Easy-to-access components** to reduce downtime for maintenance. **Ergonomic joystick** that controls the movements of the skip and the transmission. **Axles with final epicyclic gearing** that provides improved traction.





**D100AHA 1000KG**  
UNLOADING SYSTEM HIGH  
POWER 15.6KW    WIDTH 1,100MM    TRANSMISSION HYDROSTATIC



**D100AHA COMPACT 1000KG**  
UNLOADING SYSTEM HIGH  
POWER 15.6KW    WIDTH 1,000MM    TRANSMISSION HYDROSTATIC



**D100AHG 1000KG**  
UNLOADING SYSTEM ROTATING  
POWER 15.6KW    WIDTH 1,100MM    TRANSMISSION HYDROSTATIC



**D120AHA 1200KG**  
UNLOADING SYSTEM HIGH  
POWER 15.6KW    WIDTH 1,210MM    TRANSMISSION HYDROSTATIC



**D120AHG 1200KG**  
UNLOADING SYSTEM ROTATING  
POWER 15.6KW    WIDTH 1,210MM    TRANSMISSION HYDROSTATIC



**D150AHA 1500KG**  
UNLOADING SYSTEM HIGH  
POWER 15.6KW    WIDTH 1,480MM    TRANSMISSION HYDROSTATIC



**D150AHG 1.500KG**  
UNLOADING SYSTEM ROTATING  
POWER 15.6KW    WIDTH 1,480MM    TRANSMISSION HYDROSTATIC





# ARTICULATED DUMPER

## 2000 - 3000 - 3500 - 4500 KG

Dumpers designed for major earthworks in urban and intercity settings or in private projects. They have a very good power-to-weight ratio, making them manoeuvrable and allowing them to easily cope with steep slopes.

All components have been designed to ensure quick and simple maintenance with minimal downtime.



### FEATURED EQUIPMENT

**Folding ROPS** for ease of transportation. **Spacious driver's position** for comfortable and safe handling. **Hydrostatic transmission** to ensure smooth and safe operation for the user. **Easy-to-access components** to reduce downtime for maintenance. **Ergonomic joystick** that controls the movements of the skip and the transmission. **Seat belt with a buckle sensor and seat with presence sensor** to prevent the machine from being used without following the minimum safety procedures. **Negative brake** which is automatically engaged when the engine is turned off.





**D201AHG 2000KG**  
UNLOADING SYSTEM ROTATING  
POWER 18.5KW WIDTH 1,500MM TRANSMISSION HYDROSTATIC



**D301AHG 3000KG**  
UNLOADING SYSTEM ROTATING  
POWER 18.5KW WIDTH 1,750MM TRANSMISSION HYDROSTATIC



**D350AHG 3500KG**  
UNLOADING SYSTEM ROTATING  
POWER 36.5/32.8KW WIDTH 1,850MM TRANSMISSION HYDROSTATIC



**D450AHG 4500KG**  
UNLOADING SYSTEM ROTATING  
POWER 32.8KW WIDTH 1,870MM TRANSMISSION HYDROSTATIC



# ARTICULATED DUMPER

## 6000 - 10000 KG

Our range of dumpers with the highest payload is designed for large-scale earthworks, especially on intercity construction sites and in open spaces. These are powerful and robust models that are equipped with the latest technology to minimise fuel consumption.

They also have a digital display in the driver's cab which provides all of the machine's real-time information, allowing you to run self-diagnostics without the need for any external tools.



### FEATURED EQUIPMENT

**Digital screen** with all of the information about the machine and self-diagnostics. **Smart Stop** (optional), which switches off the machine's engine when it is not in use, to make it more cost-effective. **Easy-to-access internal components** to reduce costs and facilitate maintenance. **The limited-slip differential** on both axles offers the best off-road drive available on the market. **Seat belt with a buckle sensor and seat with presence sensor** to prevent the machine from being used without following the minimum safety procedures. **Negative brake** which is automatically engaged when the engine is turned off. **Camera with all-round vision** on the skip.





**D601AHG 6000KG**  
UNLOADING SYSTEM ROTATING  
POWER 55.4KW WIDTH 2,210MM TRANSMISSION HYDROSTATIC



**D601APG 6000KG**  
UNLOADING SYSTEM ROTATING  
POWER 55.4KW WIDTH 2,210MM TRANSMISSION TORQUE CONVERTER



**D1001APG 10000KG**  
UNLOADING SYSTEM ROTATING  
POWER 55.4KW WIDTH 2,410MM TRANSMISSION TORQUE CONVERTER



# REVERSIBLE DUMPER

## 6000 - 10000 KG

The reversible design allows the entire driver's cab to turn 180°: seat, steering wheel, pedals, joystick...giving the operator a clear view of their surroundings at all times. This system also allows you to always use front-wheel drive, thus reducing the number of manoeuvres and increasing load-moving speed.

AUSA's reversible dumpers are equipped with the latest technology to reduce fuel consumption and improve the safety of the operator and area around them.

### FEATURED EQUIPMENT

**Access to the driving position** on both sides of the machine. **ECO Mode** to automatically regulate the RPM to ensure low consumption and reduced maintenance costs. **Digital screen** with all of the information about the machine and self-diagnostics. **Hill holder**, which keeps the machine stationary on any slope, without putting your foot on the brake. **The limited-slip differential** on both axles offers the best off-road drive available on the market. **Smart Stop**, which switches off the machine's engine when it is not in use, to make it more cost-effective. **Negative brake** which is automatically engaged when the engine is turned off. **Camera with all-round vision** on the skip.







**DR601AHG 6000KG**  
UNLOADING SYSTEM ROTATING  
POWER 55.4KW WIDTH 2,210MM TRANSMISSION HYDROSTATIC



**DR1001AHG 10000KG**  
UNLOADING SYSTEM ROTATING  
POWER 55.4KW WIDTH 2,410MM TRANSMISSION HYDROSTATIC





All AUSA dumpers can be equipped with AUSAnow, the software used to remotely control machines, providing you with all real-time information.



**Control your fleet of machines**

From your office or with your mobile phone. Control all of your AUSA machines in real time. With AUSAnow you can anticipate any faults and maintenance, to reduce downtime.



**Get information and make decisions**

View or create your own personalised charts to obtain in-depth information about the operation of your machines and make decisions that are based on analytical information.



**Connect security alarms**

Establish a schedule and security perimeter. If one of your machines is moved outside the established area, AUSAnow will alert you straight away so that you can deal with it.



**Data, data and more data**

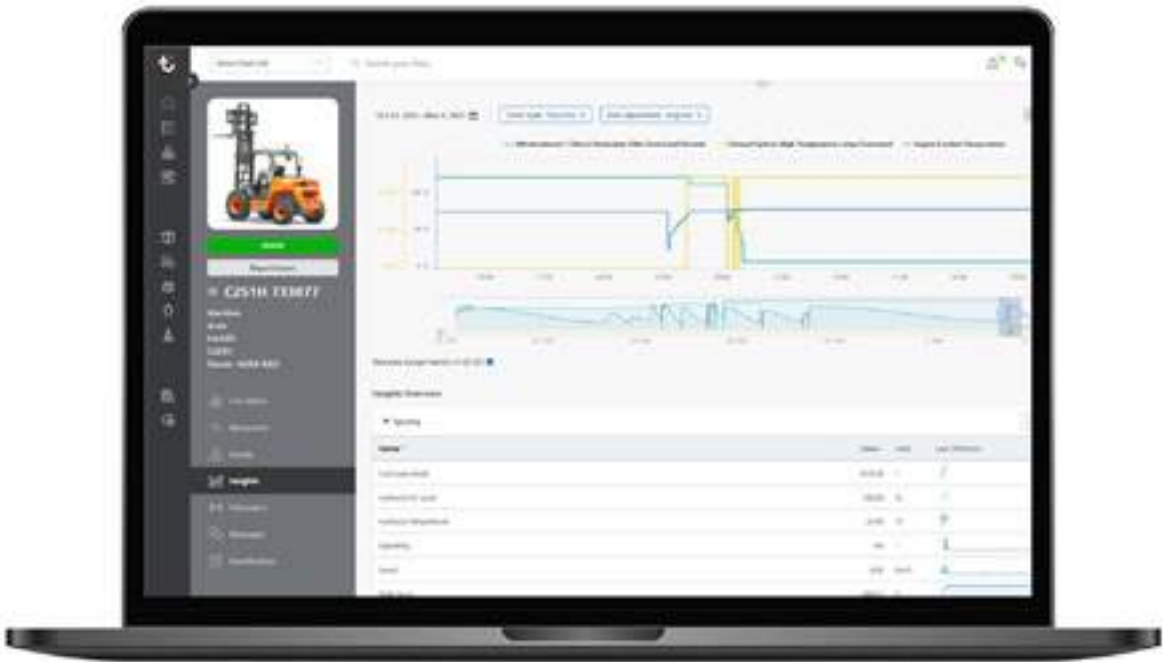
AUSAnow allows you to obtain advanced real-time information about your machine fleet. View advanced charts for customised time periods based on the parameters set by you.



**Reduce downtime**

AUSAnow connects you to your dealer or rental company, so that any appropriate maintenance can be performed. If you have a problem, AUSAnow provides you with a direct channel of communication with your machine supplier, so that it can be resolved as quickly as possible.

- Preventive alerts
- Attach images



**Alarms for your peace of mind**

Activate AUSA's recommended maintenance alerts and keep your machines in tip-top condition. And, for your security, you can program geofences and receive alerts if they go outside the established boundaries.

- Customise a schedule
- Set a perimeter



# TECHNICAL DATA

		D101AEA / COMPACT	D151AEG
GENERAL	UNIT		
Unloading system	-	High	Rotating
Load capacity	kg	1000	1500
Chassis	-	Articulated	
Water hopper capacity	l	345	520
Level hopper capacity	l	395	626
Heaped hopper capacity	l	565	900
Empty weight *	kg	1430	1530
Transmission	-	Electric	
Reversibility	-	No	
ENGINE			
Brand / Model	-	-	
Power	kW	-	
Peak/Nominal power	kW	19,6 / 7,6	
Operating speed	rpm	-	
Peak torque	N.m	130	
No. of cylinders	-	-	
Emissions	-	Zero emissions	
Noise	dB(A)	-	
DRIVING			
Max. speed	km/h	14	
Maximum gradient	%	35	
External turning radius	mm	3390	3390
Traction	-	4x4	4x4
Tyres	-	27x8.50-15 / 6.5/80-12	10.0/75-15.3
HYDRAULIC SYSTEM			
Hydraulic circuit	-	12cc. Gear pump	
Flow rate	l/min	22,8	
Working pressure	bar	180	
TANK CAPACITY			
Fuel	l	-	
Hydraulic system	l	24,5	
BRAKES			
Service	-	Sealed. Hydraulic drive	
Parking	-	Negative brake and electro-hydraulic release	
BATTERY			
Battery type	-	Lithium-Ion Battery (NCM)	
Gross capacity	kWh	9,3	
System voltage	V	51,2	
Autonomy ***	-	One intense shift	
CHARGE			
Charger	-	Integrated	
Charging time 20-80% **	-	2h (@230V)	
Charging time 20-80% (external fast charger) **	-	1h (@400V)	
Charging cable plug type	-	16A 110V (yellow); 16A 230V (blue); 16A 400V (red)	

\* It may change due to optional equipment    \*\* Subject to environmental conditions and to the kind and power of charging station.  
\*\*\* Subject to environmental conditions and the kind of use. For temperatures under 0°C it is recommended to fit the "Additional battery for longer range (+3.1 kWh)".

D100AHA / COMPACT		D100AHG		D120AHA		D120AHG	
High		Rotating		High		Rotating	
1000		1000		1200		1200	
Articulated							
345		325		425		415	
395		390		515		495	
565		545		700		695	
1300		1300		1375		1375	
Hydrostatic							
No							
KUBOTA D1105-E4B							
15,6							
-							
2400							
71,4@1600							
3							
Stage V, Tier 4							
101							
15		15		17		17	
38		38		48		48	
3060		3035		3125		3095	
4x4		4x4		4x4		4x4	
27x8.5-15 / 6.5/80-12		27x8.5-15		10.0/75-15.3		10.0/75-15.3	
8cc. Gear pump							
17,28							
180							
23		23		23		23	
21,2		21,2		21,2		21,2	
Sealed. Mechanical drive							
Mechanical drive							
-							
-							
-							
-							
-							
-							
-							
-							



# TECHNICAL DATA

		D150AHA	D150AHG	D201AHG
GENERAL		UNIT		
Unloading system	-	High	Rotating	Rotating
Load capacity	kg	1500	1500	2000
Chassis	-	Articulated		
Water hopper capacity	l	605	520	695
Level hopper capacity	l	681	626	1084
Heaped hopper capacity	l	841	900	1337
Empty weight	kg	1510	1510	2083
Transmission	-	Hydrostatic		
Reversibility	-	No		
ENGINE				
Brand / Model	-	KUBOTA D1105-E4B		KUBOTA V1505-E4B
Power	kW	15,6		18,5
Operating speed	rpm	2400		2300
Torque	N·m	71,4@1600		92,6@1700
No. of cylinders	-	3		4
Emissions	-	Stage V, Tier 4		Stage V, Tier 4
Injection	-	Mechanical pump		
Exhaust aftertreatment	-	-		-
Noise	dB(A)	101		101
DRIVING				
Max. speed	km/h	14	14	17
Maximum gradient	%	40	40	50
External turning radius	mm	3260	3260	3955
Traction	-	4x4	4x4	4x4
Tyres	-	10.0/75-15.3	10.0/75-15.3	11.5/80-15.3
HYDRAULIC SYSTEM				
Hydraulic circuit	-	8cc. Gear pump		12cc. Gear pump
Flow rate	l/min	17,28	17,28	25
Working pressure	bar	180	180	175
TANK CAPACITY				
Fuel	l	23	23	37,5
Hydraulic system	l	21,2	21,2	37,4
BRAKES				
Service	-	Sealed. Mechanical drive		Hydrostatic, retention
Parking	-	Mechanical drive		Negative, integrated in the transfer box

D301AHG		D350AHG		D450AHG	
		Rotating			
3000		3500		4500	
		Articulated			
984		1020		1370	
1320		1790		2055	
1742		2130		2670	
2300		2831		2970	
Hydrostatic					
No					
KUBOTA V1505-E4B		KUBOTA V2403M-E3B		KUBOTA D1803-CR-T-E5B	
18,5		36,5		32,8	
2300		2700		2400	
92,6@1700		160@1600		150,5@1500	
4		4		3	
Stage V, Tier 4		Stage IIIA, Tier 4i		Stage V, Tier 4f	
Mechanical pump		Mechanical pump		Common Rail	
-		-		DPF (Diesel particulate filter)	
101		101		101	
17		19		22	
50		54		35	
3955		4515		4830	
4x4		4x4		4x4	
11.5/80-15.3		11.5/80-15.3		12.0/75-18	
12cc. Gear pump					
25		26,6		26,6	
175		170		200	
37,5		44		44	
37,4		40		40	
Sealed. Hydraulic drive					
Negative brake and electro-hydraulic release					



# TECHNICAL DATA

		D601AHG		D601APG	
GENERAL		UNIT			
Unloading system	-	Rotating			
Load capacity	kg	6000		6000	
Chassis	-	Articulated			
Water hopper capacity	l	1665		1665	
Level hopper capacity	l	2455		2455	
Heaped hopper capacity	l	3154		3154	
Empty weight	kg	4465		4465	
Transmission	-	Hydrostatic		Torque converter	
Reversibility	-	No			
ENGINE					
Brand / Model	-	DEUTZ TD3.6 L4			
Power	kW	55,4			
Operating speed	rpm	2200			
Torque	N·m	330@1600			
No. of cylinders	-	4			
Emissions	-	Stage IIIB - Tier 4f			
Injection	-	Common Rail			
Exhaust aftertreatment	-	DOC (diesel oxidation catalyst)			
Noise	dB(A)	101			
DRIVING					
Max. speed	km/h	25		25	
Maximum gradient	%	45		45	
External turning radius	mm	5900		5900	
Traction	-	4x4		4x4	
Tyres	-	405/70-20		405/70-20	
HYDRAULIC SYSTEM					
Hydraulic circuit	-	Two gears pump		Two gears pump	
Flow rate	l/min	50		46	
Working pressure	bar	180		180	
TANK CAPACITY					
Fuel	l	69		69	
Hydraulic system	l	60		60	
BRAKES					
Service	-	Sealed. Hydraulic drive			
Parking	-	Negative brake and electro-hydraulic release			

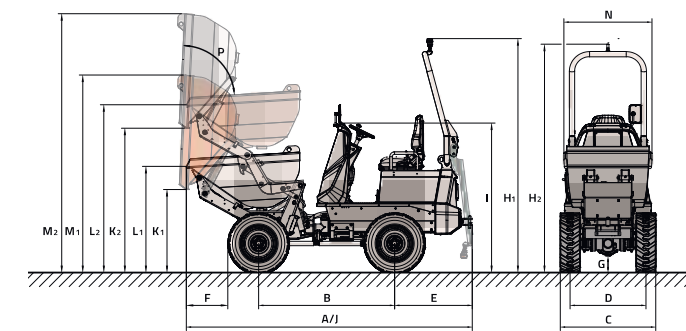
D1001APG		DR601AHG		DR1001AHG	
		Rotating			
10000		6000		10000	
		Articulated			
1850		1665		1850	
3300		2455		3300	
3900		3154		3900	
5153		4840		5050	
Torque converter		Hydrostatic			
No		Yes			
DEUTZ TCD3.6 L4 HT		DEUTZ TD3.6 L4		DEUTZ TCD3.6 L4 HT	
55,4		55,4		55,4	
2200		2200		2200	
390@1300		330@1600		390@1300	
4		4		4	
Stage IIIB - Tier 4f		Stage IIIB - Tier 4f		Stage IIIB - Tier 4f	
Common Rail		Common Rail		Common Rail	
DOC (diesel oxidation catalyst)		DOC (diesel oxidation catalyst)		DOC (diesel oxidation catalyst)	
101		101		101	
25		25		22	
45		45		45	
6287		5900		6287	
4x4		4x4		4x4	
500/60-22.5		405/70-20		500/60-22.5	
Two gears pump		Two gears pump		Two gears pump	
46		50		50	
180		180		180	
69		69		69	
60		60		60	
		Sealed. Hydraulic drive			
		Negative brake and electro-hydraulic release			



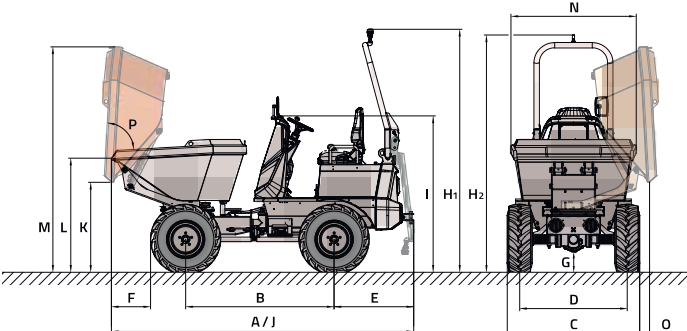
DIMENSIONS

DIMENSIONS

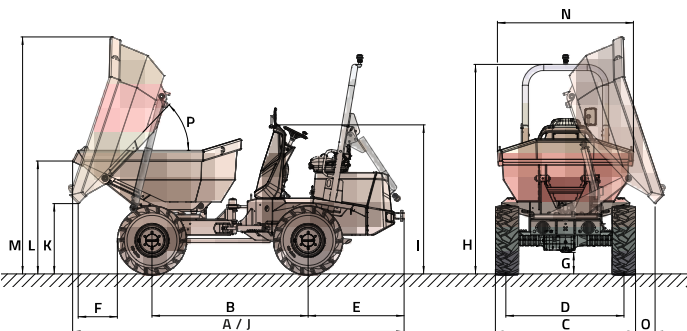
D101AEA



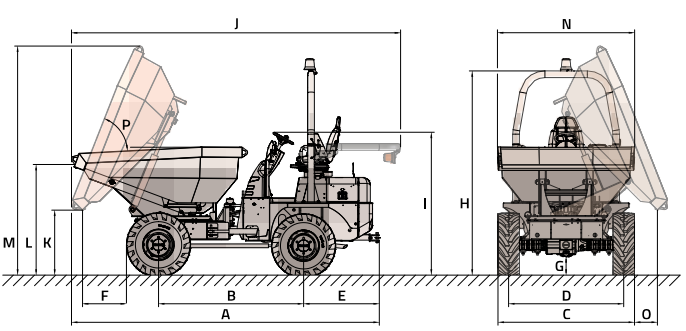
D151AEG



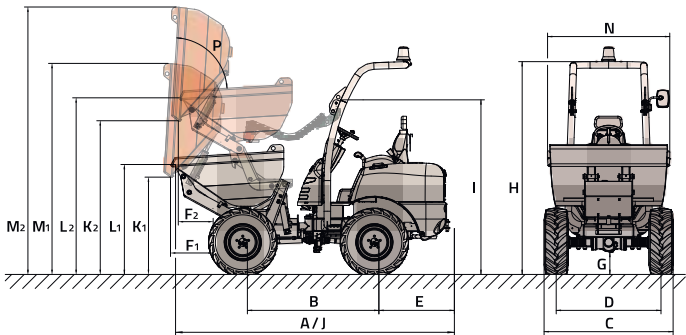
D201AHG / D301AHG



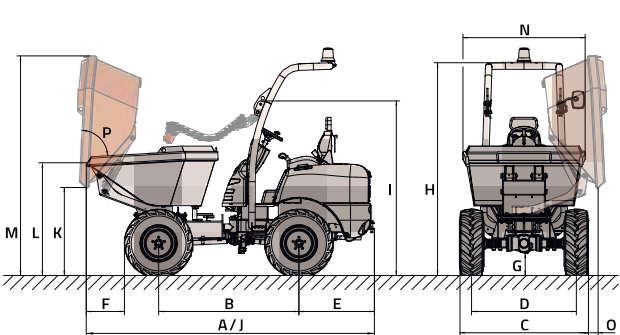
D350AHG / D450AHG



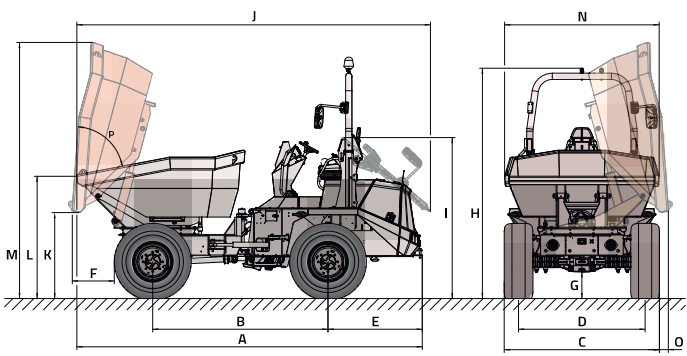
D100AHA / D120AHA / D150AHA



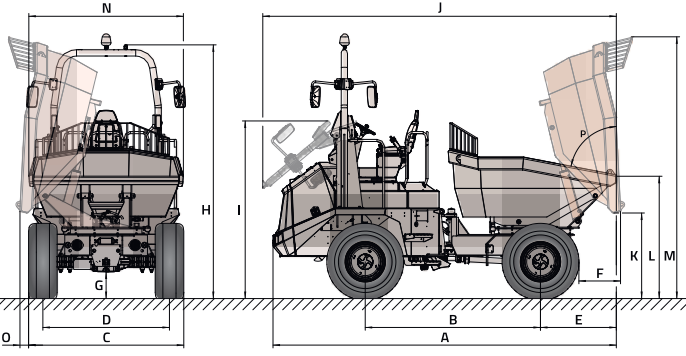
D100AHG / D120AHG / D150AHG



D601AHG / D601APG / D1001APG



DR601AHG / DR1001AHG



	D101AEA		D101AEA COMPACT		D151AEG	D100AHA		D100AHA COMP		D100AHG	D120AHA		D120AHG	D150AHA		
DIMENSIONS (mm)																
A	3260		3260		3360	3200		3200		3200	3200		3200	3200		
B	1550		1550		1650	1500		1500		1500	1500		1500	1500		
C	1083		990		1480	1100		990		1100	1210		1210	1480		
D	865		815		1195	865		815		865	925		925	1195		
E	885		885		885	860		860		860	860		860	860		
F	497		531		460	500	460	545	505	500	460	420	460	460	420	
G	186		144		250	210		170		210	250		250	250		
H	2673	2613	2639	2579	2715	2655	2400		2360		2400	2440		2440	2440	
I	1713		1679		1730	1960		1920		1960	2000		2000	2000		
J	3260		3260		3235	3200		3200		3200	3200		3200	3200		
K	939	1639	888	1588	1000	950	1710	910	1670	950	990	1750	1000	990	1750	
L	1214	1914	1163	1863	1290	1230	1980	1180	1940	1230	1270	2020	1270	1270	2020	
M	2258	2958	2224	2924	2500	2250	3010	2210	2970	2350	2300	3050	2400	2300	3050	
N	1000		1000		1400	1000		1000		1000	1200		1200	1400		
O	-		-		135	-		-		310	-		260	-		
DIMENSIONS (°)																
P	83		83		83	83		83		83	83		83	83		
	1 ▲	▲ 2	1 ▲	▲ 2	1 ▲	▲ 2	1 ▲	▲ 2	1 ▲	▲ 2	1 ▲	▲ 2	1 ▲	▲ 2	1 ▲	▲ 2

D150AHG	D201AHG	D301AHG	D350AHG	D450AHG	D601AHG	D601APG	D1001APG	DR601AHG	DR1001AHG
3300	3995	4140	4170	4380	4910	4910	5020	4910	5020
1600	1880	1950	1960	1960	2490	2490	2690	2490	2690
1480	1500	1750	1840	1860	2210	2210	2410	2210	2410
1195	1235	1460	1555	1555	1800	1800	1920	1800	1920
860	1200	1200	1025	1025	1340	1340	1340	1080	990
460	480	490	600	775	580	580	485	580	485
250	240	260	260	310	380	380	410	380	410
2440	2560	2605	2770	2820	3280 (3110*)	3280 (3110*)	3640 (3380*)	3610 (3350*)	3640 (3380*)
2000	1805	1850	1940	2100	2290	2290	2560	2530	2560
3300	3995	4140	4450	4660	5030	5030	5140	5030	5140
1000	935	865	870	735	1220	1220	1260	1220	1260
1290	1305	1420	1490	1640	1740	1740	1820	1740	1820
2500	2910	2950	3090	3190	3640	3640	3830	3720	3940
1400	1480	1700	1850	1870	2200	2200	2330	2200	2330
135	260	250	310	520	110	110	155	110	155
83	49	46,5	65	65	75	75	75	75	75

\* With closed cab.



EQUIPMENT

EQUIPMENT

	D101AEA	D151AEG	D100 AHA/AHG	D120 AHA/AHG	D150 AHA/AHG	D201AHG	D301AHG	D350AHG (36,5 kW)	D350AHG (32,8 kW)	D450AHG	D601AHG	D601APG	D1001APG	DR601AHG	DR1001AHG
DRIVING POSITION															
Front folding ROPS protective structure			●	●	●										
Rear folding ROPS protective structure	●	●	○	○	○	●	●	●	●	●	●	●	●	●	●
Closed ROPS/FOPS cab with heating											○	○	○	○	○
Closed ROPS/FOPS cab with heating and air conditioning											○	○	○	○	○
SAFETY															
Seat belt with fasten sensor	●	●				●	●	●	●	●	●	●	●	●	●
Seat with operator's presence sensor	●	●				●	●	●	●	●	●	●	●	●	●
Rotating beacon			●	●	●			●	●	●					
LED rotating beacon	●	●				●	●				●	●	●	●	●
LED green rotating beacon	○	○				○	○				○	○	○	○	○
Acoustic warning for reverse gear	●	●	●	●	●	●	●		●	●	●	●	●	●	●
Emergency stop	●	●	○	○	○	○	○	○			●	●	●	●	●
Anti-vandal security system	●	●	●	●	●	●	●	●	●	●	●	●	●	●	●
Hill Holder - hill-start assist	●	●									●			●	●
Negative brake	●	●				●	●		●	●	●	●	●	●	●
Full visibility camera on the skip side											●	●	●	●	●
Full visibility camera on the counterweight side and proximity sensors											○	○	○	○	○
Full visibility cameras on the skip and counterweight sides and proximity sensors						○	○	○	○	○					
Protective grille on the skip													○	●	●
Reflective decals on rear body			○	○	○	○	○	○	○	○	○	○	○	○	○
LIGHTING AND DRIVING															
Road lights	○	○	○	○	○	○	○	○	○	○	○	○	○	○	○
Front LED working lights	○	○				○	○								
Rear-view mirror	●	●	●	●	●	●	●	●	●	●	●	●	●	●	●
Second rear-view mirror	○	○				○	○				○	○	○	●	●
Third rear-view mirror											○	○	○	○	○
Adhesive plate 20 km/h	○	○	○	○	○	○	○	○	○	○					
COMFORT															
Adjustable ergonomic seat	●	●	●	●	●	●	●	●	●	●	●	●	●	●	●
Extra comfort seat, fully adjustable			○	○	○			○							
All-in-one joystick	●	●	●	●	●	●	●	●	●	●	●	●	●	●	●
ADVANCED EQUIPMENT															
Electric transmission	●	●													
Hydrostatic transmission			●	●	●	●	●	●	●	●					
Hydrostatic transmission with electronic control											●			●	●
Limited-slip differential on both axles											●	●	●	●	●
ECO Mode system											●			●	●
Smart Stop system											○	○	○	○	○
Digital display	●	●									●	●	●	●	●
Advanced support	●	●													
AUSAnow fleet manager	○	○	○	○	○	○	○		○	○	○	○	○	○	○
Additional battery for longer range (+3.1 kWh)	○	○													

	D101AEA	D151AEG	D100 AHA/AHG	D120 AHA/AHG	D150 AHA/AHG	D201AHG	D301AHG	D350AHG (36,5 kW)	D350AHG (32,8 kW)	D450AHG	D601AHG	D601APG	D1001APG	DR601AHG	DR1001AHG
ACCESSORIES															
Metal engine cover	●	●	○	○	○	●	●								
Front mudguards	○	○				○	○	○	○	○	○	○	○	○	○
Reverse gear acoustic warning disable switch			○	○	○	○	○	○	○	○	○	○	○	○	○
White noise acoustic warning for reverse gear			○	○	○	○	○		○	○	○	○	○	○	○
Battery master switch	●	●				●	●		●	●	●	●	●	●	●
Car radio											○	○	○	○	○
Waterproof document holder	○	○	○	○	○	○	○	○	○	○	○	○	○	○	○
Water separator diesel filter						○	○	○	●	●					
Air filter with cyclone pre-filter						○	○		○	○					
Biodegradable hydraulic oil	○	○	○	○	○	○	○	○	○	○				○	○
Rockinger hitch								○	○	○					
Rockinger hitch with power socket											○	○	○	○	○
Towing ball and pintle hitch	○	○				○	○		○	○	○	○			
Towing ball and pintle hitch with power socket			○	○	○										
Power socket for the trailer	○	○				○	○	○	○	○	○	○	○	○	○
TYRES															
Narrow tyres 10.0/75-15.3"							○								
Turf tyres 400/60 -15.5"							○		○	○					
Turf tyres 400/70-20"											○	○		○	
SPARE PARTS															
1,000 h maintenance kit	○	○	○	○	○	○	○	○	○	○	○	○	○	○	○
Spare wheel	○	○	○	○	○	○	○	○	○	○	○	○	○	○	○

● Standard ○ Optional



**AUSA**  
**C/ Castelladral 1**  
**08243 Manresa - Barcelona**  
**SPAIN**  
**Tel. +34 93 874 7311**  
**[ausa@ausa.com](mailto:ausa@ausa.com)**  
**[www.ausa.com](http://www.ausa.com)**

AUSA Spain: +34 91 669 00 06 [ausa.madrid@ausa.com](mailto:ausa.madrid@ausa.com)  
AUSA France: +33 (0) 4 68 54 38 97 - [ausa.france@ausa.com](mailto:ausa.france@ausa.com)  
AUSA U.K.: +44 (0)7703 60 9009 - [ausa.uk@ausa.com](mailto:ausa.uk@ausa.com)  
AUSA Central Europe: +49 2384 9415725 - [kontakt@ausa.com](mailto:kontakt@ausa.com)  
AUSA U.S.: +1 (310) 426 2305 - [ausa.us@ausa.com](mailto:ausa.us@ausa.com)  
AUSA CHINA: +86 10 8598 7386 - [ausa.china@ausa.com](mailto:ausa.china@ausa.com)

MKCAT.AD.OC.EN03

Distributor's stamp



[www.ausa.com](http://www.ausa.com)