

# TELEHANDLERS

Ultracompact, versatile and capable







3,500 lb ELECTRIC

4

T 164E



2,700 lb

8

T144H



3,500 lb

10

T164H



4,400 - 5,000 lb

12

T204H

T235H

Technical data

16

Dimensions

19

Equipment

20



# ELECTRIC TELEHANDLER

## 3,500 lb

Electric, powerful, all-terrain. The T164E electric telescopic handler is the perfect vehicle for material lifting tasks with no CO2 emissions. It has been designed with sufficient capacity for a complete day of work without needing to be recharged.

And whenever necessary, it can be connected directly to the mains via a single-phase or three-phase socket. It also features a fast charger.

An ideal vehicle for working in emission-free spaces, such as greenhouses, municipal works carried out at night, indoors, etc.

With a peak power of 18.4 kW and excellent off-road capability, it can work on difficult terrain and gradients of up to 32%.

### FEATURED EQUIPMENT

**Charging cable** in the vehicle, so it can be plugged in at any time. **Ergonomic joystick** that controls the hydraulic functions and the transmission. **Seat belt with a buckle sensor and seat with presence sensor** to prevent the machine from being used without the minimum safety measures. **Digital screen** with all of the information about the machine and self-diagnostics. **Hill holder**, which keeps the machine stationary on any slope, without putting your foot on the brake. **Negative brake** that is applied automatically when the motor stops. **Energy recovery system** that increases the battery range.







Battery capacity  
**Up to 18.6 kWh**

Charging from  
20 to 80%  
**3:15 h\***

Battery type  
**Li-Ion**



**T164E 3,500 lb**  
**MAXIMUM LIFT** 13.1 ft  
**POWER** 28.4 hp **WIDTH** 58 in **TRANSMISSION** ELECTRIC





**T144H 2,700 lb**  
**MAXIMUM LIFT** 13.1 ft  
**POWER** 24.8 hp **WIDTH** 55.3 in **TRANSMISSION** HYDROSTATIC

**FEATURED EQUIPMENT**

**Spacious driver's cab** for comfortable and safe handling. **Ergonomic joystick** that controls the movements of the panel, the hydraulic functions and the transmission. **Seat belt with a buckle sensor and seat with presence sensor** to prevent the machine from being used without following the minimum safety procedures. **Permanent 4WD** with automatic anti-slip system. **Hydrostatic transmission** to ensure smooth and safe operation for the user. **Slow approach pedal** for precise maneuvering.

# TELEHANDLER

## 2,700 lb

The T144H is the smallest ultra-compact telescopic handler available on the market. At just 55 inches wide, it is the best solution for handling and transporting materials in confined spaces, especially in difficult-to-access areas with steep terrain. It can also easily be transported with a conventional trailer.

It has hydraulic functions and quick connect couplings for accessories and attachments, allowing it to be customized to suit each need. It is the perfect vehicle for landscaping work, greenhouses, agriculture and construction.







**T164H 3,500 lb**  
**MAXIMUM LIFT** 13.1 ft  
**POWER** 24.8 hp **WIDTH** 58 in **TRANSMISSION** HYDROSTATIC

#### FEATURED EQUIPMENT

**Ergonomic joystick** that controls the hydraulic functions and the transmission. **Seat belt with a buckle sensor and seat with presence sensor** to prevent the machine from being used without the minimum safety measures. **Digital screen** with all of the information about the machine and self-diagnostics. **Negative brake** that is applied automatically when the motor stops. **Slow approach pedal** for precise movements.

# TELEHANDLER

## 3,500 lb

The T164H is capable of lifting a payload of up to 1,600 kg and has a maximum lift of 4 metres. Thanks to its compact dimensions, the direction of its rear wheels and its excellent manoeuvrability, it is the telescopic handler with the best turning radius of its category, including forks. Its excellent off-road capability also means that it offers a grade-ability of 40%. In short, the T164H is the telescopic handler with the best quality-price ratio on the market.

Ideal for working in small spaces, above all in the building sector and in agricultural tasks or landscaping.





# TELEHANDLERS

## 4,400 - 5,000 lb

AUSA's range of telescopic handlers with the highest payload. They are versatile machines whose payload allows them to handle larger materials. They are equipped with 4x4x4 drive, allowing them to cope with the most difficult terrains. They have three steering modes for improved maneuverability and approaches: front-wheel, four-wheel and crab.

They are designed to increase the driver's safety and comfort. The side position of the arm ensures a more spacious cab, while minimizing the overall cab width. The advanced cab position provides the operator with 360 degree vision.

### FEATURED EQUIPMENT

**Tilting cab** for easy access to the engine and components. **Ergonomic joystick** that controls the movements of the panel, the hydraulic functions and the transmission. **Seat belt with a buckle sensor and seat with presence sensor** to prevent the machine from being used without following the minimum safety procedures. **Digital screen** to access machine information and on board diagnostics. **Limited-slip differential** on the front axle, which transmits the necessary amount of power to each individual wheel. **Three steering modes**: front-wheel, four-wheel and "crab mode". **Slow approach pedal** for precise maneuvering.







**T204H** 4,400 lb  
MAXIMUM LIFT 13.8 ft  
POWER 44.5 hp WIDTH 62.6 in TRANSMISSION HYDROSTATIC



**T235H** 5,000 lb  
MAXIMUM LIFT 16.4 ft  
POWER 44.5 hp WIDTH 62.6 in TRANSMISSION HYDROSTATIC



# TECHNICAL DATA

		T164E	T144H
GENERAL	UNIT		
Load capacity	lb	3,500	2,700
Load capacity at maximum height	lb	1,800	1,555
Maximum lift	ft	13.1	13.1
Maximum lift under maximum load	ft	10.8	11.1
Maximum reach	ft	5.7	5.5
Maximum load at maximum reach	lb	1,415	1,200
Unladen weight *	lb	7,430	5,570
Transmission	-	Electric	Hydrostatic
ENGINE			
Make / Model	-	-	KUBOTA V1505-E4B
Power	hp	-	24.8
Peak/Nominal power	hp	28.4/11.5	-
Operating speed	rpm	-	2300
Peak torque	N.m	134	92.6@1,700
No. of cylinders	-	-	4
Emissions	-	Zero emissions	Tier4
Noise	dB(A)	-	101
DRIVING			
Maximum speed	mph	9.9	11.4
Gradeability under full load	%	38	25
External turning radius	in	135	117.4
Traction	-	4X4 FullGrip®	4WD
Tyres	-	10/75-15.3	11.0/65-12
HYDRAULIC SYSTEM			
Hydraulic circuit	-	Three gears pump	Two gears pump
Flow rate	gal/min	7.6	5.5
Working pressure	psi	3,045	3,481
TANK CAPACITY			
Fuel	gal	-	14.5
Hydraulic system	gal	8.7	8.4
BRAKES			
Service	-	Hydraulic and regenerative	Hydrostatic retention
Parking	-	Negative brake	Negative at the hydrobase
BATTERY			
Battery type	-	Lithium-Ion Battery (NCM)	-
Gross capacity	kWh	15.5	-
System voltage	V	48	-
Autonomy	-	One intense shift	-
CHARGE			
Charger	-	Integrated	-
Charging time 20-80%	-	3h 15min (@230V)	-
Charging time 20-80% (external fast charger)	-	1h (@400V)	-
Charging cable plug type	-	16A 110V (yellow); 16A 230V (blue); 16A 400V (red)	-

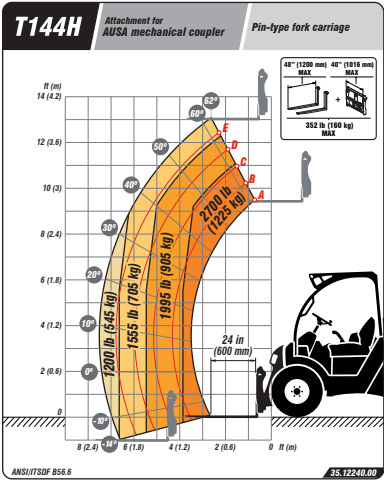
\* It may change due to optional equipment.

T164H	T204H	T235H
3,500	3,900	4,800
1,800	1,960	2,765
13.1	13.8	16.4
10.8	12.3	14.1
5.7	6.8	7.7
1,415	1,960	1,905
7,430	9,457	10,560
Hydrostatic	Hydrostatic	Hydrostatic
KUBOTA V1505-E4B	KUBOTA D1803-CR-T-E5B	KUBOTA D1803-CR-T-E5B
24.8	44	44
-	-	-
2300	2400	2400
92.6@1700	150.5@1,500	150.5@1,500
4	3	3
Tier 4	Tier4f	Tier4f
-	102	102
12.4	12.4	12.4
40	42	42
135	113.2	113.2
4X4 FullGrip®	4WD	4WD
10/75-15.3	10/75-15.3	10/75-15.3
Two gears pump	Two gears pump	Two gears pump
7.6	13.7 / 4.5	13.7 / 4.5
3,045	3, 481	3,481
14.5	17.2	17.2
8.7	18.5	18.5
Hydraulic and regenerative	Hydraulic, sealed discs	Hydraulic, sealed discs
Negative brake	Mechanical, sealed discs	Mechanical, sealed discs
-	-	-
-	-	-
-	-	-
-	-	-
-	-	-
-	-	-
-	-	-
-	-	-

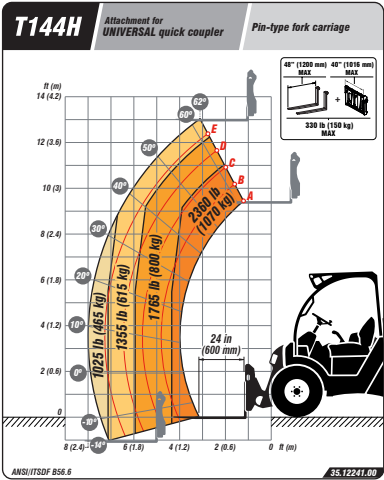


# TECHNICAL DATA

T144H AUSA carriage



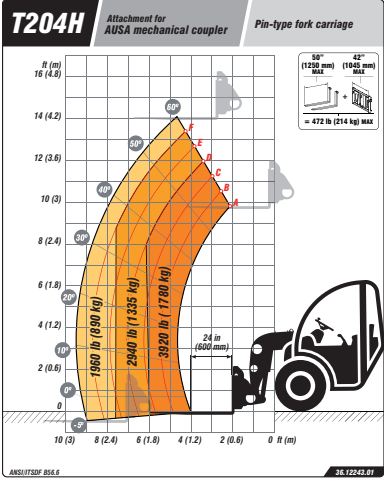
T144H Universal carriage



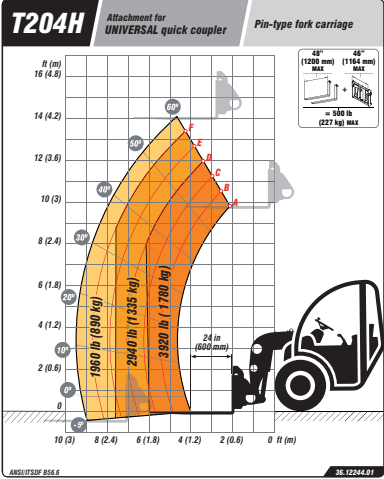
T164E / T164H Universal carriage



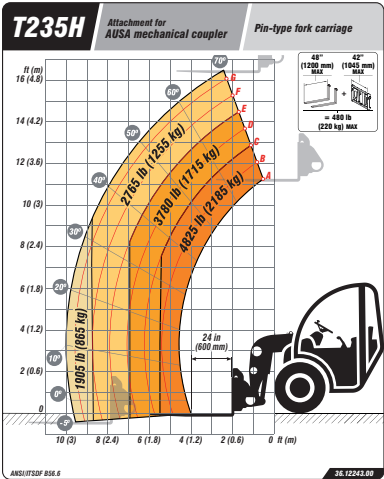
T204H AUSA carriage



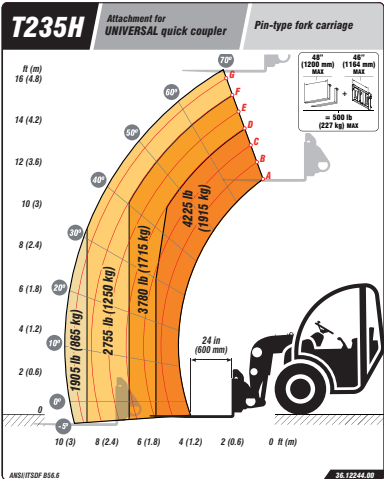
T204H Universal carriage



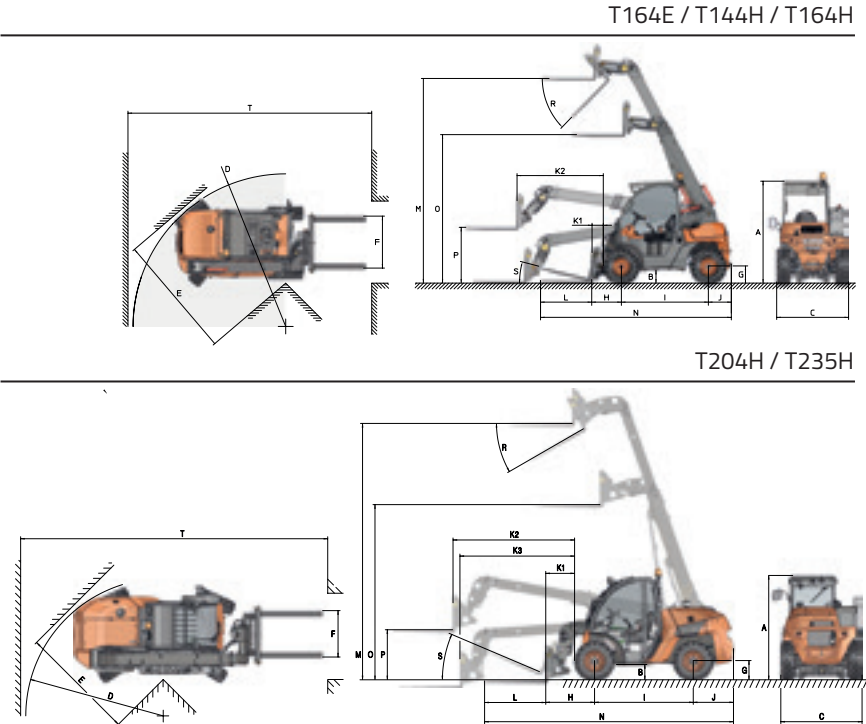
T235H AUSA carriage



T235H Universal carriage



# DIMENSIONS



	T164E	T144H	T164H	T204H	T235H
DIMENSIONS (mm)					
A	80	78.7	80	79.9	79.9
B	11	9.9	11	11.8	11.8
C	58	55.3	58	62.6	62.6
D	135	117.4	135	119.7	119.7
E	100	97.7	100	97.2	89
F	40	39.9	40	35.6	35.6
G	14	13.2	14	14.7	14.7
H	27	22.8	27	32.3	37.8
I	69	66.9	69	75.8	75.8
J	26	17.7	26	31.1	31.1
K1	11	9	11	16.9	22.4
K2	68	66.2	68	89	92.5
K3	-	-	-	82.9	88
L	39	39.4	39	47.2	47.2
M	159	157.5	159	169.3	196.5
N	161	146.8	161	186.2	192.1
O	114	115.3	114	118.1	134.2
P	43	43.1	43	42	36.7
T	202	186.2	202	231.5	231.5
DIMENSIONS (°)					
R	37	46	37	52	43
S	20	13	20	23	24



	T164E	T144H	T164H	T204H	T235H
DRIVING POSITION					
Open ROPS/FOPS cab	●	●	●		
Semi-closed ROPS/FOPS cab with front, rear and upper windscreens	○	○	○	●	●
Closed ROPS/FOPS cab with heating	○	○	○	○	○
Closed ROPS/FOPS cab with heating and air conditioning				○	○
Tilting cab with assisted lift				●	●
COUPLERS					
AUSA mechanical coupler		●		●	●
Universal mechanical coupler	●		●		
Universal hydraulic quick coupler	○	○	○	○	○
EURO8 hydraulic quick coupler	○	○	○	○	○
SAFETY					
Seat belt with fasten sensor	●	●	●	●	●
Seat with operator’s presence sensor	●	●	●	●	●
LED rotating beacon	●	●	●	●	●
Acoustic warning for reverse gear		●	●	●	●
White noise acoustic warning for reverse gear	●				
Emergency stop	●	●	●	●	●
Hill Holder - hill-start assist	●				
Negative brake	●		●		
Load level indicator	●	●	●	●	●
Overload locking system with 60-second deactivation push-button	●	●	●	●	●
Joystick lock switch	○		○		
Windscreen protective grill	○	○	○	○	○
LIGHTING AND DRIVING					
Road lights				○	○
LED Road lights	○	○	○		
LED Front (2) and rear (1) working lights	○	○	○		
Front working lights				●	●
Rear LED working light				○	○
Rear working light					
Rear-view mirror	●	●	●	●	●
Second rear-view mirror	○	○	○		
Right-side panoramic rear-view mirror	○	○	○	●	●

	T164E	T144H	T164H	T204H	T235H
COMFORT					
Adjustable ergonomic seat	●	●	●	●	●
All-in-one joystick	●	●	●	●	●
Inverted joystick functions	○	○	○	○	○
ADVANCED EQUIPMENT					
Electric transmission	●				
Hydrostatic transmission		●	●	●	●
Second-generation FullGrip® (4WD)	●		●		
Limited-slip differential on the front axle				●	●
Front-wheel, four-wheel and crab steering modes				●	●
Inching pedal	●	●	●	●	●
Digital display	●			●	●
Advanced support	●				
AUSAnow fleet manager	○	○	○	○	○
Warranty extension	○	○	○	○	○
Additional battery for longer range (+3.1 kWh)	○				
FORKS					
39.4 in forks	●	●	●		
47.2 in forks	○	○	○	●	●
41.3 in fork carriage	●	●	●	●	●
47.2 in forks, foldable for transport				○	○
47.2 in load rest	○	○	○	○	○
Built-in FEM II side shifter with 47.2 in load rest	○	○	○	○	○
IMPLEMENTS					
Two-hand control for locking and unlocking attachments	●	●	●	●	●
0.45 cu yd. shovel		○			
0.54 cu yd. shovel	○		○		
0.78 cu yd. shovel				○	○
0.91 cu yd. shovel				○	○
0.32 cu yd. 4x1 multi-function shovel		○			
0.52 cu yd. 4x1 multi-function shovel				○	○

● Standard    ○ Optional



EQUIPMENT

EQUIPMENT

	T164E	T144H	T164H	T204H	T235H
ACCESSORIES					
4th auxiliary hydraulic line	●	●	●	●	●
5th auxiliary hydraulic line	○	○	○	○	○
Auxiliary hydraulic line with continuous flow	○	○	○	○	○
Reverse gear acoustic warning disable switch			○		
Car radio	○	○	○	○	○
USB connector	○		○		
Waterproof document holder	●	●	●	○	○
Water separator diesel filter			○	●	●
Air filter with cyclone pre-filter		○		○	○
Biodegradable hydraulic oil	○	○	○	○	○
Engine block heater		○			○
Towing ball	○	○	○		
Power socket for the trailer	○	○	○		
Towing ball with power socket				○	○
TIRES					
All-terrain SSL tyres 27x10-12"		○		○	
Turf tires 10-16.5"	○				
Turf tires 26x12.00-12"		○			
Pack of 4 turf wheels 26x12.00-12		○			
Solid tires 10x75-15.3"	○		○	○	○
All-terrain 11.0/65-12"	○		○		
Non-marking solid tires 31x10-20"	○		○		
PARTS					
1,000 h maintenance kit	○	○	○	○	○
Spare wheel	○	○	○	○	○





**AUSA US CORP**  
**7635 Sandlapper Pkwy, Unit 100**  
**North Charleston SC 29420**  
**USA**  
**Tel. +1 (917) 328 0770**  
**[ausa.us@ausa.com](mailto:ausa.us@ausa.com)**  
**[www.ausa.com](http://www.ausa.com)**

AUSA Center: +34 93 874 7311 - [ausa@ausa.com](mailto:ausa@ausa.com)  
AUSA Spain: +34 91 669 00 06 [ausa.madrid@ausa.com](mailto:ausa.madrid@ausa.com)  
AUSA France: +33 (0) 4 68 54 38 97 - [ausa.france@ausa.com](mailto:ausa.france@ausa.com)  
AUSA U.K.: +44 (0) 7703 60 9009 - [ausa.uk@ausa.com](mailto:ausa.uk@ausa.com)  
AUSA Central Europe: +49 2384 9415725 - [kontakt@ausa.com](mailto:kontakt@ausa.com)  
AUSA U.S.: +1 (310) 426 2305 - [ausa.us@ausa.com](mailto:ausa.us@ausa.com)  
AUSA CHINA: +86 10 8598 7386 - [ausa.china@ausa.com](mailto:ausa.china@ausa.com)

MKCATTH-US-EN03

Distributor's stamp



[www.ausa.com](http://www.ausa.com)